

THIS DRAWING IS AN UNCONTROLLED COPY UNLESS STAMPED OTHERWISE

CONTRACTORS SHALL VERIFY JOB DIMENSIONS BEFORE ANY JOB COMMENCES. ALL SHOP DRAWINGS SHALL BE SUBMITTED TO THE SUPERINTENDENT AND MANUFACTURER SHALL NOT COMMENCE FROM THE RETURN OF UNMARKED SHOP DRAWINGS BEING BY THE CONSULTANT. FIGURED DIMENSIONS SHALL TAKE PRECEDENCE OVER SCALES. THIS DRAWING SHALL BE USED IN CONSTRUCTION WITH ALL RELEVANT CONTRACT SPECIFICATIONS AND DRAWINGS COPYRIGHT OF THIS DRAWING IS VESTED IN WARDLE

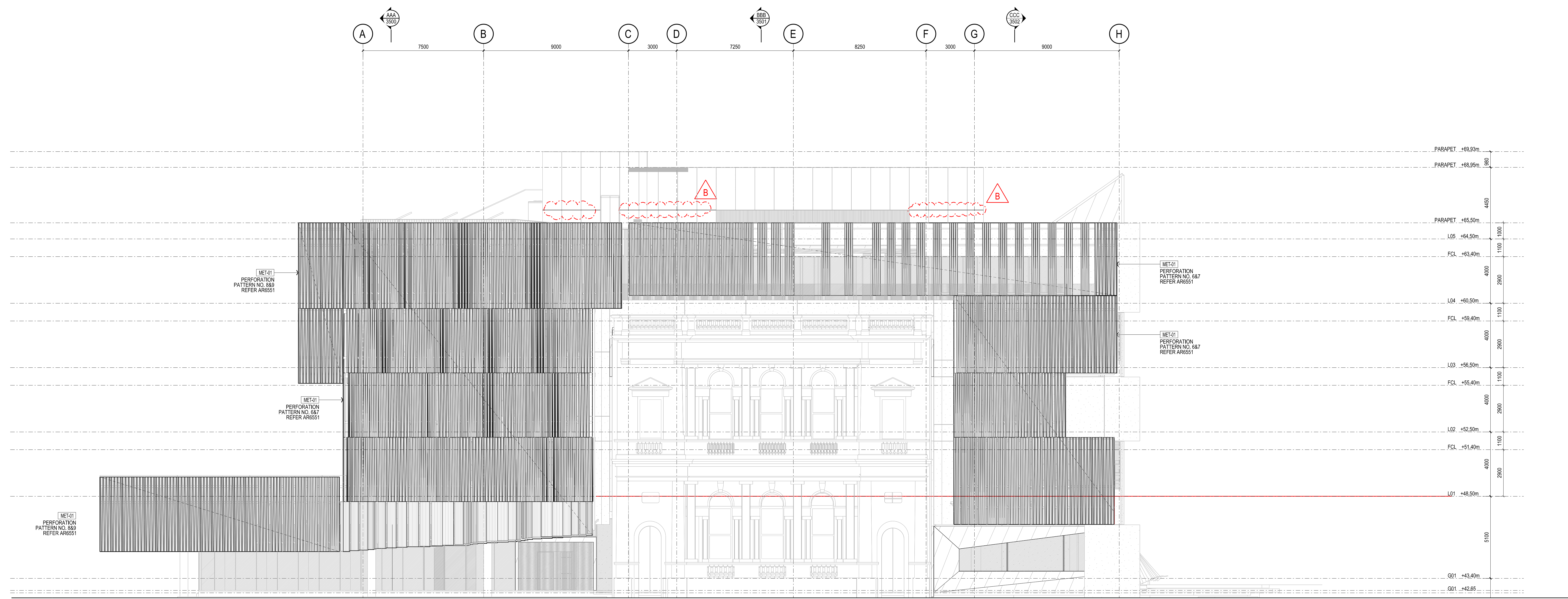
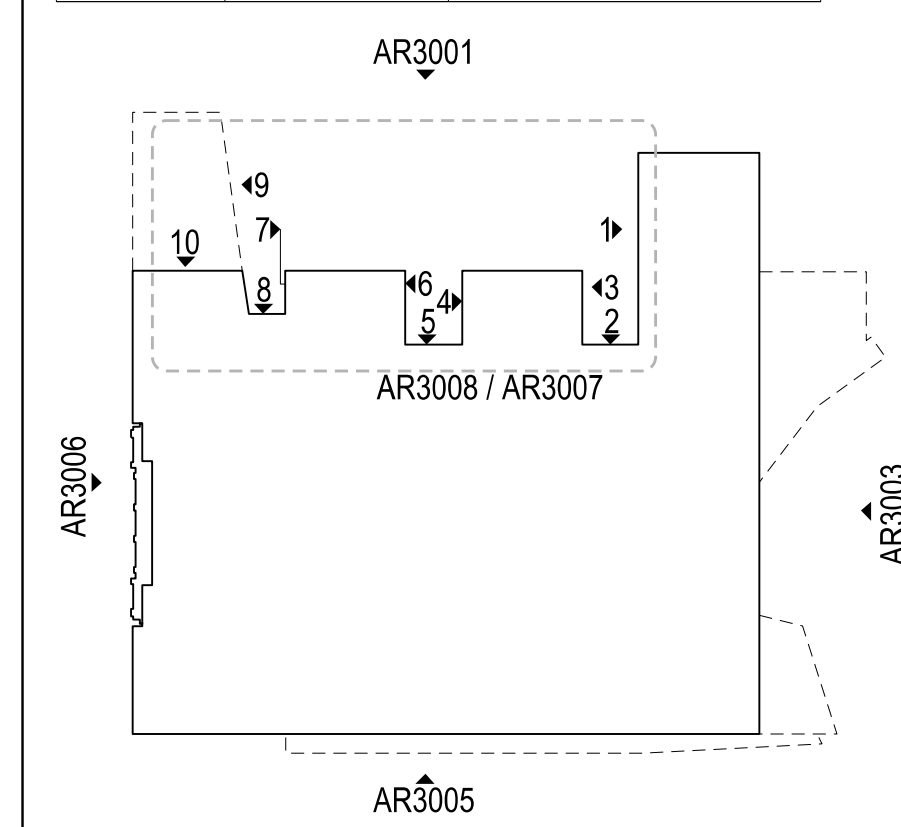
General Notes

KEY REFERENCE ARCHITECTURAL DRAWING SERIES:
 FACADE SETOUT AR1502 - AR1507
 PRECAST SETOUT AR1512 - AR1517
 SCREEN SETOUT AR1552 - AR1557
 SCREEN DETAILS AR550 - AR554
 PRECAST DETAILS AR830 - AR834

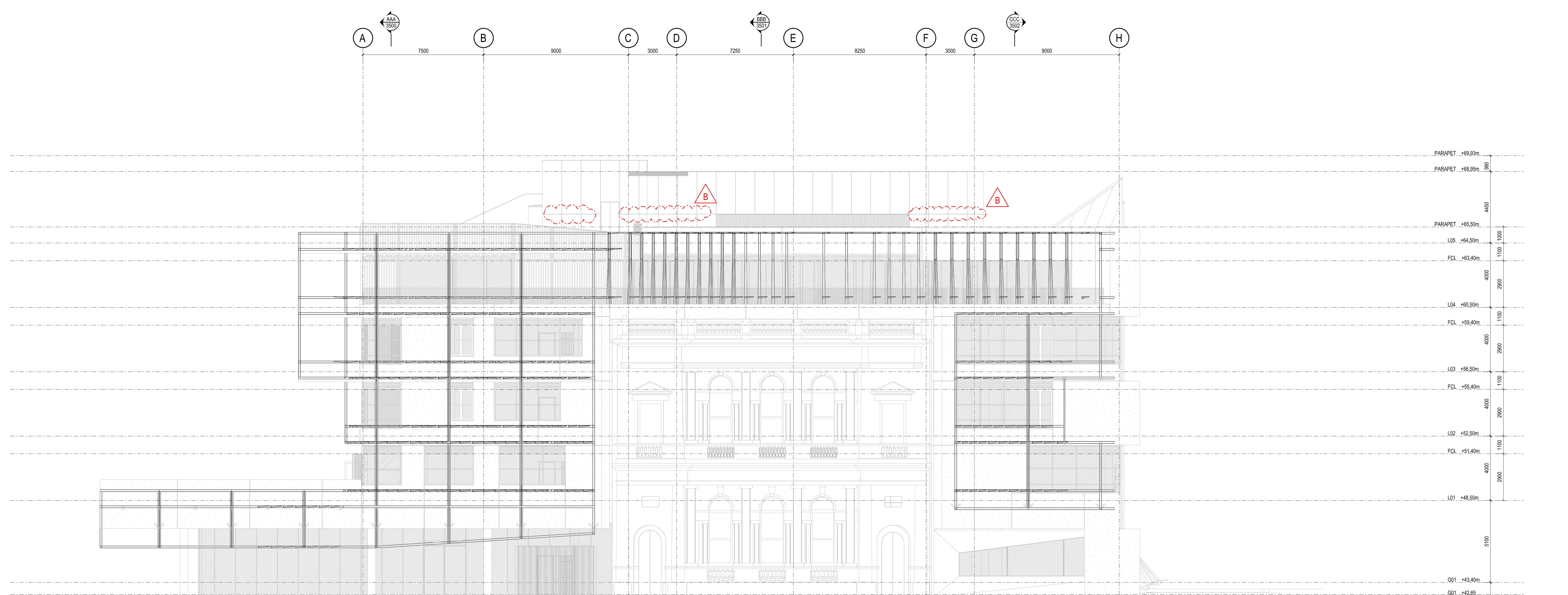
LEGEND:
 [FSX] FACADE TYPE, REFER FACADE SCHEDULE [FC] FACADE NOTE
 [AWM] AWNING WINDOW MANUAL
 [AWA] AWNING WINDOW AUTOMATIC
 [A/V] ACTIVE LOUVRE - NATURAL VENTILATION WITH DAMPER
 [ALM] ACTIVE LOUVRE - MECHANICAL
 [NL] NON-ACTIVE LOUVRE
 [FP] FIXED PANEL
 [SP] SPANDREL PANEL
 [FJ] FALSE JOINT - RER. TO PRECAST DETAILS
 [VB] VISIBLE BACKPAN
 [U] MOVEMENT JOINT
 [LS] LIGHT SHELF

FACADE NOTES SPECIFIC:
 FC.01 PROVIDE NOTCH IN PRECAST FOR STEEL OUTRIGGER/STUB BEAM REF. TO AR8003 & AR8303
 FC.02 -
 FC.03 -

FACADE/PRECAST CODE	FRONT FINISH	REAR FINISH
PR-01	HONED	---
PR-06	OFF-FORM	---
PR-08	HONED	ACID WASH
PR-09	OFF-FORM	ACID WASH
PR-10	HONED	HONED



01 WEST ELEVATION WITH SCREENS
SCALE 1:100



02 WEST ELEVATION WITH STEEL FRAME
SCALE 1:100

Rev	Issue	Revision Description	And	Date
B	SG	JOINTS ADDED TO PLANT ROOM CLADDING		24.01.14
	SG	L01 SOUTH WEST SCREENS EXTENDED		13.12.13
A	SG	ISSUE FOR CONSTRUCTION		13.12.13
13	SG	VALUE MANAGEMENT ISSUE		28.03.13
12	SG	TENDER ADDENDUM 5		15.10.12
11	SG	TENDER ADDENDUM 4		08.10.12
10	SG	100% CD - TENDER ISSUE		07.09.12
09	SG	90% CD ISSUE		10.08.12
08	SG	75% CD ISSUE		13.07.12
07	SG	50% CD ISSUE		08.06.12
06	SG	25% CD ISSUE		20.04.12
05	JC	FINAL DD ISSUE		24.02.12
04	JC	DESIGN DEVELOPMENT ISSUE		20.01.12
03	JC	DESIGN DEVELOPMENT ISSUE		22.12.11
02	JC	PRELIMINARY DD		02.11.11
01	JC	PRELIMINARY DD		07.10.11



NADAAA
 NADAAA Telephone +1 617 442 8232
 1520 Washington Street No.2 Facsimile +1 888 442 1417
 Boston Massachusetts Email nadaaa@nadaaa.com
 02115 USA

John Wardle Architects
 25 Rokeby Street, Collingwood, Victoria 3066 Australia
 Tel: +61 3 8662 0400 www.johnwardlearchitects.com
 © 2014 John Wardle Architects ABN 83 006 814 268

Client **University of Melbourne Parkville Campus**

Project **Faculty of Architecture Building and Planning**

Title **ELEVATIONS WEST ELEVATION WITH SCREEN**

Project No.	0913	Scale	1:100 @ A0 1:200 @ A2
Drawing No.	AR3007	Revision	B

Date: May 2011 Drawn: - Co-Ord: - Check: -

FILENAME - \$FILES
FOR CONSTRUCTION